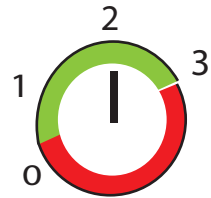


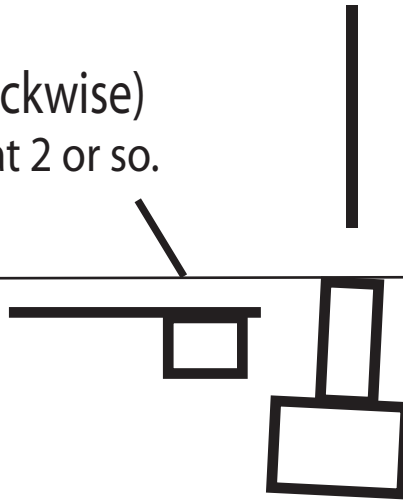
1) Most Boilers have a large white Key underneath. Don't touch.

2)

To the left of the key is a small white plastic square. This is the water filler. Turn it to the left (anti-clockwise) until the water pressure is at 2 or so.



When finished, turn it back tightish. Don't overdo it.



3)

Some boilers have a simple flexible pipe between 2 of the pipes under the boiler.

Turn the tap on this pipe to open it.

